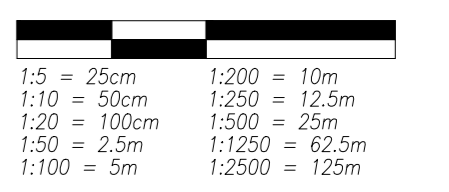
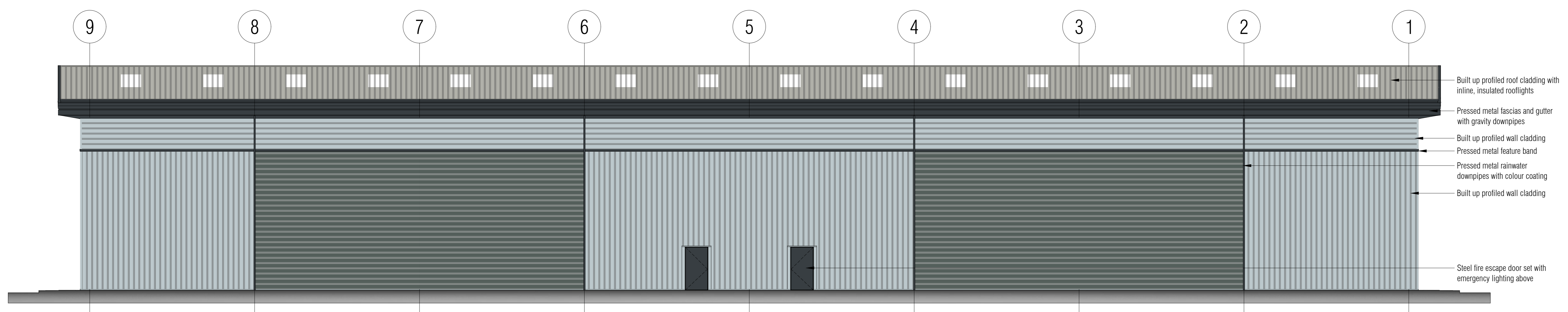


**notes**  
 This drawing and design is the copyright of aja architects ltd and must not be reproduced in part or in whole without prior written consent. Contractors must verify all dimensions on site before commencing work or preparing shop drawings for the build.  
 Where this drawing contains any Ordnance Survey mapping material, it has been reproduced under licence number 100020728.  
 Ordnance Survey © Crown copyright

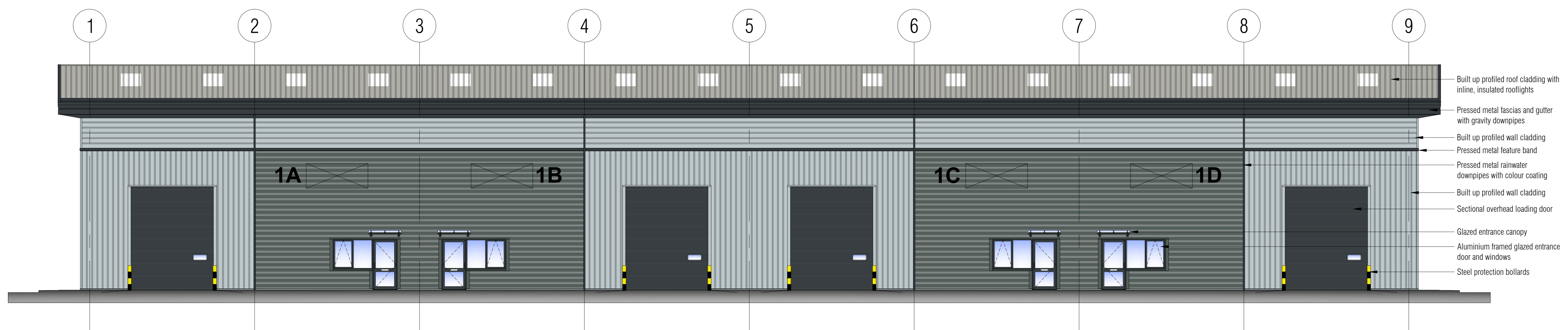


**Schedule of Materials**

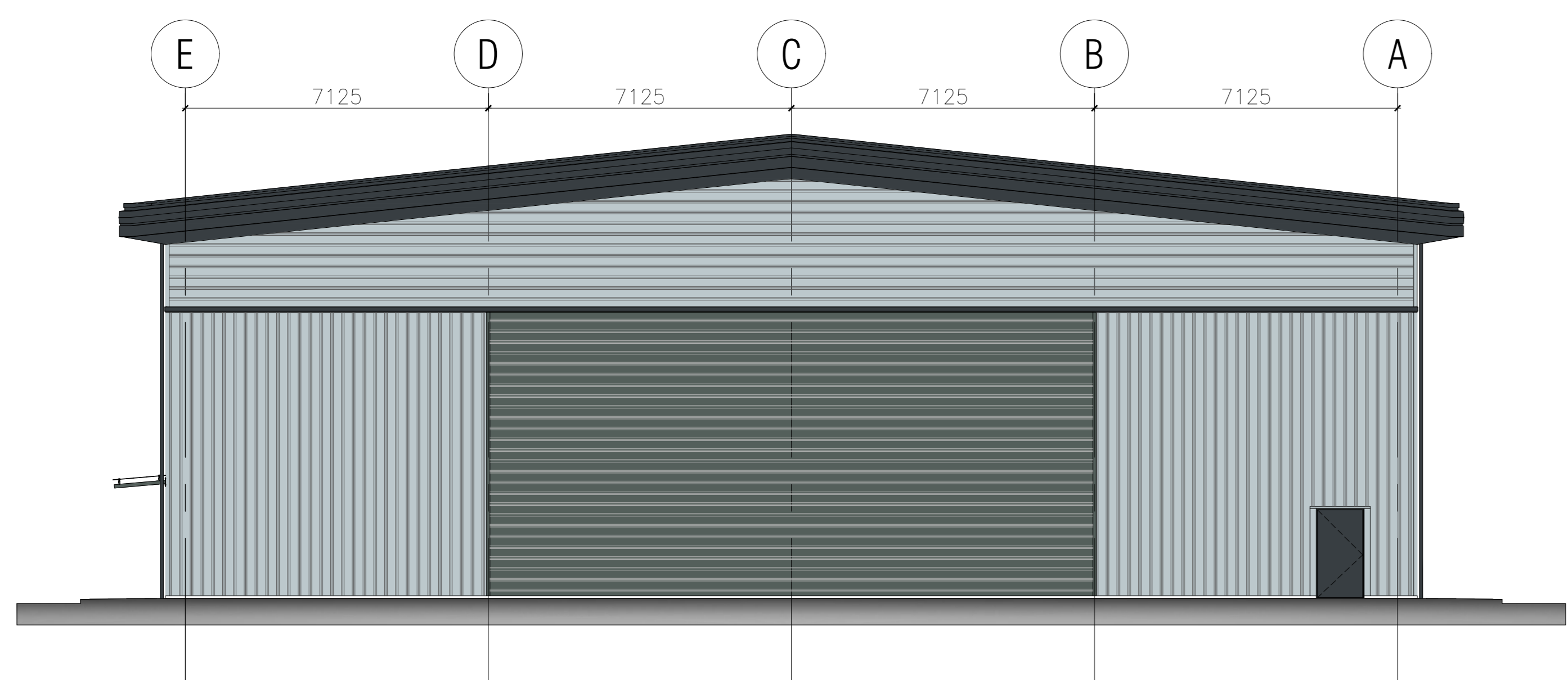
|   |   |
|---|---|
| <b>Roof</b>   | Tata steel hps 200 ultra trapezoidal profiled built up steel cladding<br>colour - Goosewing Grey RAL 7038                     |
| <b>Rooflights area</b>  | Inline GRP safety rooflights 'walk on' (10% roof area)  |
| <b>Horizontal trapezoidal profiled wall cladding above feature band</b> | Tata steel hps 200 ultra pre-finished profiled steel cladding<br>colour - Albatross RAL 240 80 05                             |
| <b>Flashing perimeter feature band</b>                                  | Preformed pressed metal flashing<br>Colour - Anthracite RAL 7016  |
| <b>Vertical trapezoidal profiled wall cladding below feature band</b>   | Tata steel hps 200 ultra pre-finished profiled steel cladding<br>Colour - Albatross RAL 240 80 05                             |
| <b>Flashings to wall cladding</b>                                       | Preformed pressed metal flashing<br>Colour - Merlin Grey RAL 180 40 85  |
| <b>Eaves fascia</b>   | Preformed pressed metal fascia<br>Colour - Anthracite RAL 7016  |
| <b>Windows, curtain walling and doors</b>                               | Aluminium frames with polyester powder coating<br>Colour - external Anthracite RAL 7016<br>internal - Standard white RAL 9016 |
| <b>Glass</b>  | Solar reflective glass g-value of 0.5   |
| <b>Fire escape doors</b>  | Steel door sets -<br>Colour - external Anthracite RAL 7016<br>internal - White RAL 9016                                       |
| <b>Level entry loading doors</b>  | Sectional overhead insulated doors<br>Colour - external Anthracite RAL 7016<br>internal - Standard White                      |
| <b>Bollards to level entry loading doors</b>                            | 160mm dia steel tube with base plate bolted to yard slab with black & yellow painted bands                                    |
|   | Panatrim Signage System.<br>3000mm x 1200mm panel for tenants logo etc  |



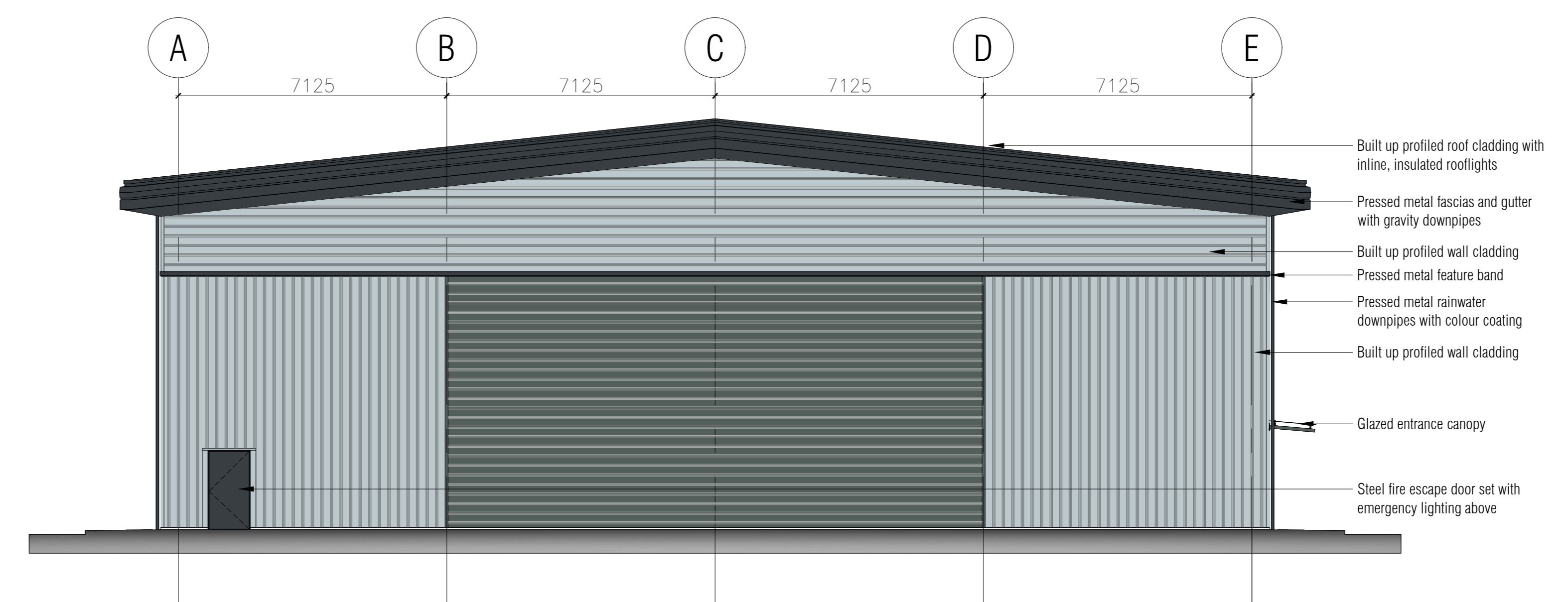
Rear Elevation Unit 1



Front Elevation Unit 1



Side Elevation Unit 1

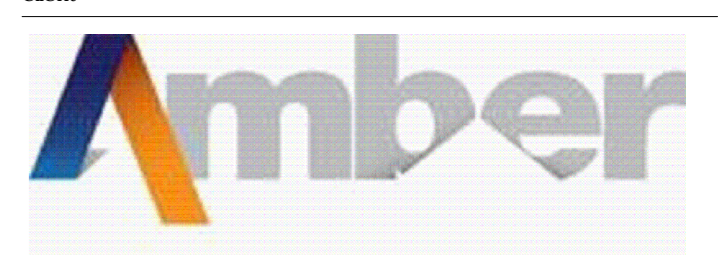


Side Elevation Unit 1

|     |          |                                  |     |
|-----|----------|----------------------------------|-----|
| B   | 18.03.19 | scale bar added                  | ans |
| A   | 08.03.19 | unit layout & elevations revised | TW  |
| no. | date     | revision                         | by  |



aja architects ltd  
 1170 Elliott Court  
 Herold Avenue  
 Coventry Business Park  
 COVENTRY CV5 4UB  
 T: 024 7625 3200  
 F: 024 7625 3210  
 E: aja@aja-architects.com  
 W: www.aja-architects.com  
 aja architects ltd is a limited liability partnership registered in England No. OC326271  
 eSind



project  
**Gaerwen Ind. Est**  
**Gaerwen**  
**Anglesey**

drawing

**Unit 1 Elevations**

|         |            |      |            |
|---------|------------|------|------------|
| scale   | 1:100 @ A0 | down | TW         |
| checked | ans        | date | 08-03-2019 |

6401-111 B  
 PLANNING