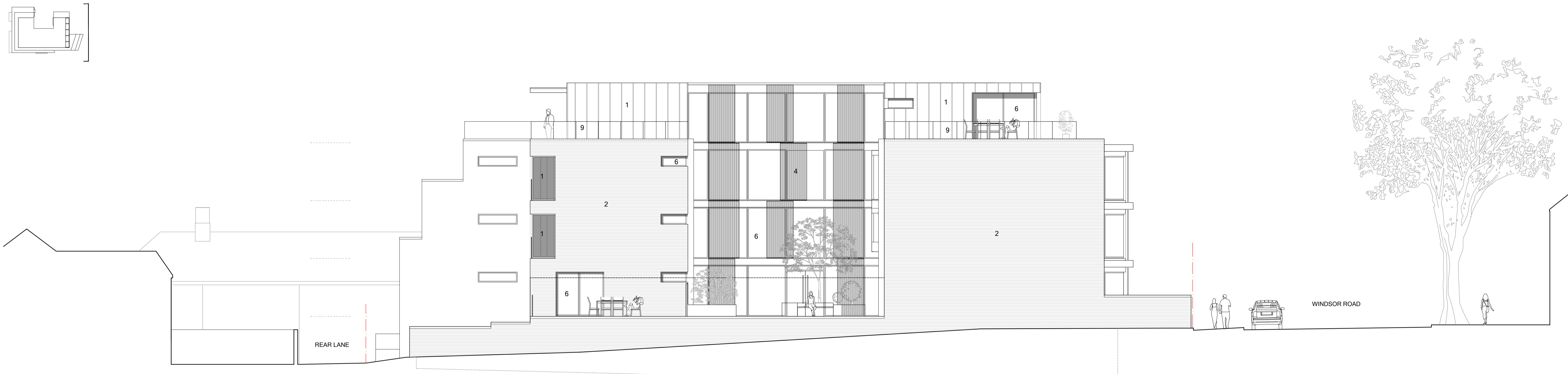


MATERIALS

1. vmzinc standing seam cladding
2. facing brickwork - grey / cream multi
3. precast concrete panels - cream
4. ceramic vertical louvres -
5. green wall
6. powder coated aluminium windows and doors - dark grey
7. powder coated aluminium windows with aluminum blank panels - dark grey
8. powder coated aluminium oriel windows - dark grey
9. frameless glass balustrade / juliette balconies
10. painted steel railings - dark grey
11. painted metal sliding gate and personnel door - dark grey



PROPOSED ELEVATION TO REAR LANE / REAR OF RAILWAY TERRACE 1:100



PROPOSED ELEVATION TO NO.56 WINDSOR ROAD 1:100



Figured dimensions and levels to be used. Any inaccuracies must be notified to the architect. Detail drawings and large scale drawings take precedence over smaller drawings.

Rev:
-

Chk'd:	Rev:

Chk'd:	Rev:

Chk'd:

PRELIMINARY	
PLANNING	✓
DESIGN	
TENDER	
CONSTRUCTION	

**powelldobson**  
ARCHITECTS

Cardiff Office: Suite 1F, Building One, Eastern Business Park, Wern Fawr Lane, Old St Mellons, Cardiff CF3 5EA  
Tel: +44 (0)33 33 201 001 www.powelldobson.com

Drawing No.	Rev.
18098 (05) 119	-

Contract: X-Stream Developments  
Former Garage Site, Windsor Road, Penarth

Scale: 1:100 @ A1  
Date: November 2018  
Drawn: CHT  
Checked:

Title: Proposed Elevations - Sheet 2