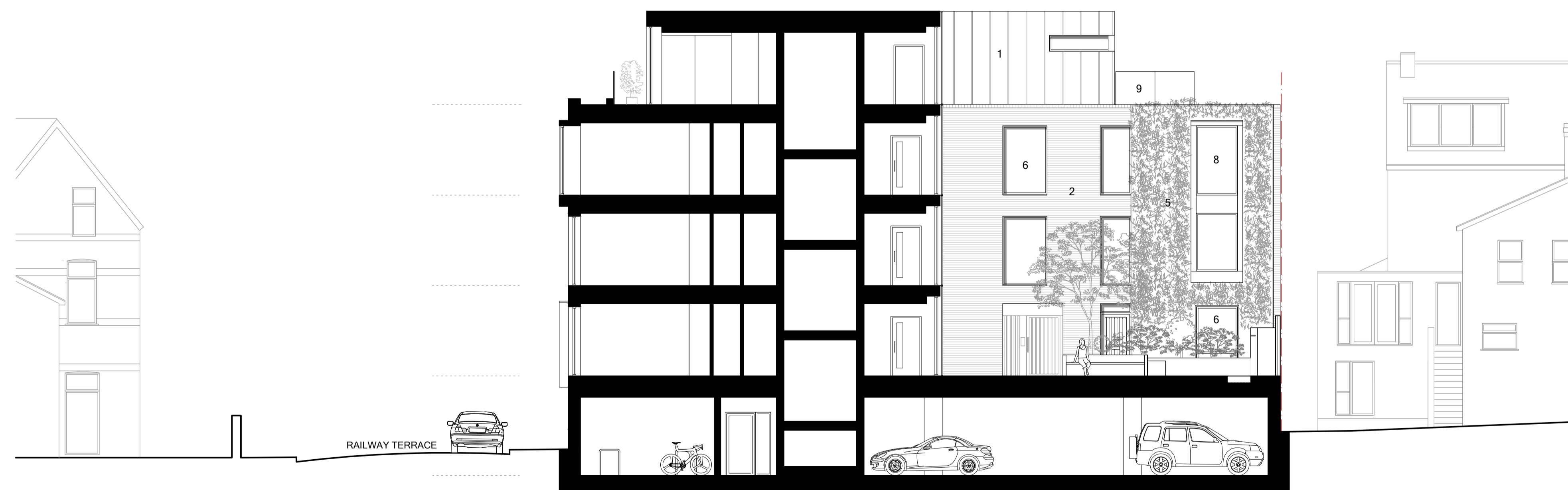
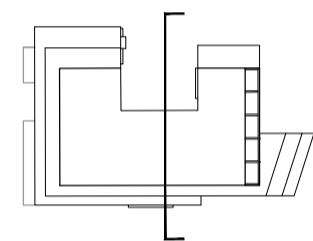


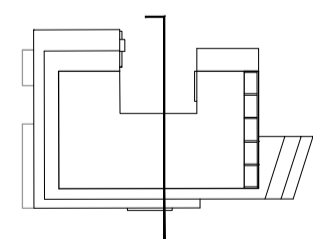
MATERIALS

1. vmzinc standing seam cladding
2. facing brickwork - grey / cream multi
3. precast concrete panels - cream
4. ceramic vertical louvres
5. green wall
6. powder coated aluminium windows and doors - dark grey
7. powder coated aluminium windows with aluminum blank panels - dark grey
8. powder coated aluminium oriel windows - dark grey
9. frameless glass balustrade / Juliette balconies
10. painted steel railings - dark grey
11. painted metal sliding gate and personnel door - dark grey

PROPOSED NORTH EAST ELEVATION TO COURTYARD 1:100



PROPOSED SOUTH WEST ELEVATION TO COURTYARD 1:100



Figured dimensions and levels to be used.
Any inaccuracies must be notified to the architect.
Detail drawings and large scale drawings take precedence over smaller drawings.

| Rev: | Chk'd: | Rev: | Chk'd: | Rev: | Chk'd: |
|------|--------|------|--------|------|--------|
| - | - | - | - | - | - |

| | |
|--------------|---|
| PRELIMINARY | |
| PLANNING | ✓ |
| DESIGN | |
| TENDER | |
| CONSTRUCTION | |

powelldobson
ARCHITECTS

Cardiff Office: Suite 1F, Building One, Eastern Business Park, Wern Fawr Lane, Old St Mellons, Cardiff CF3 5EA
Tel: +44 (0)33 33 201 001 www.powelldobson.com

| Drawing No. | Rev. |
|----------------|------|
| 18098 (05) 120 | - |

Contract: X-Stream Developments
Former Garage Site, Windsor Road, Penarth
Title: Proposed Elevations - Sheet 3

Scale: 1:100 @ A1
Date: November 2018
Drawn: CHT
Checked: