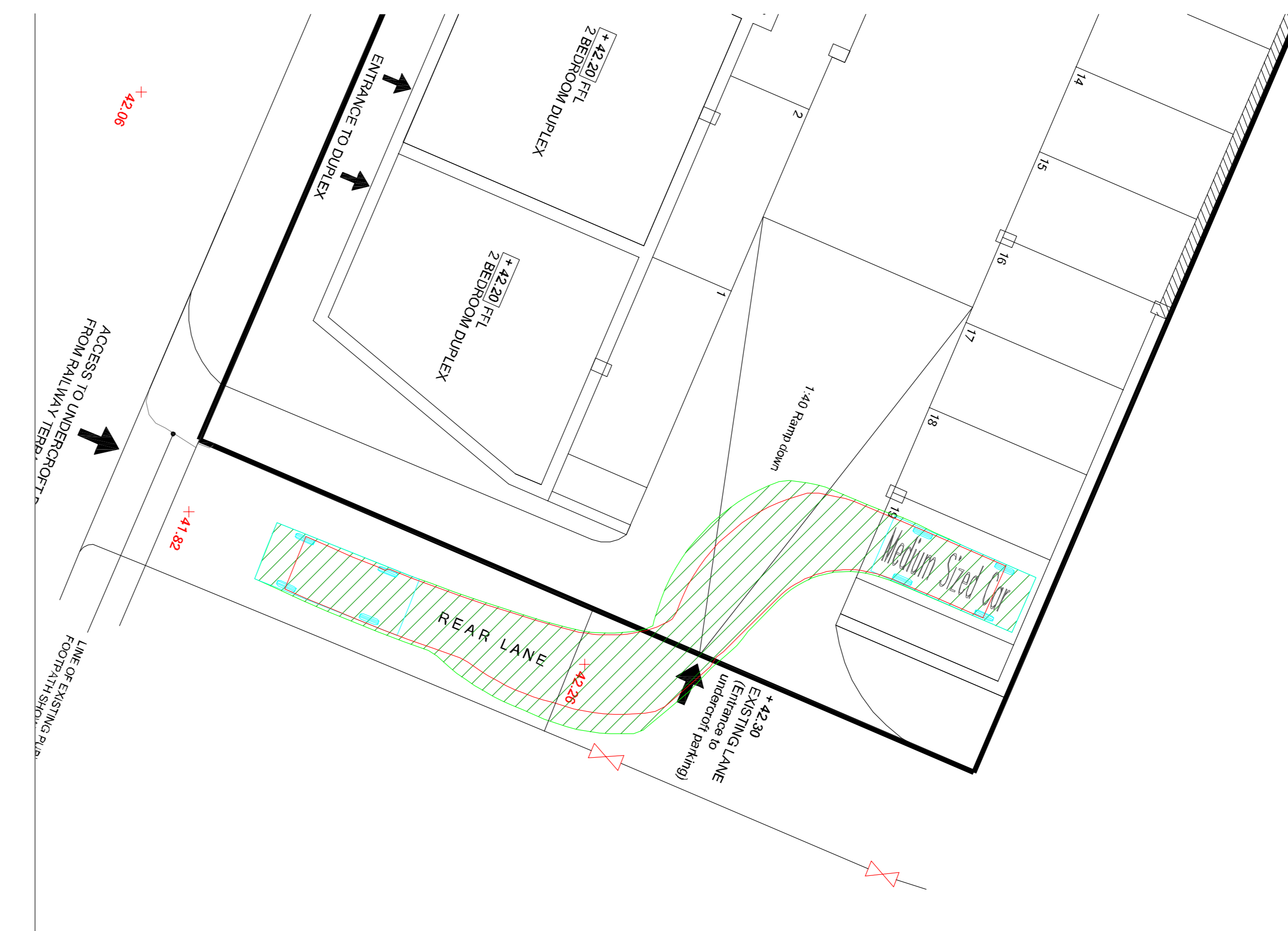


# Appendix A

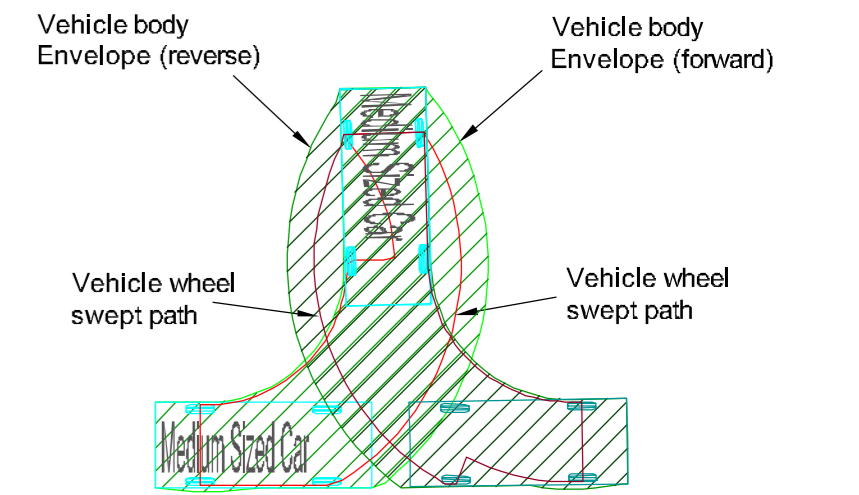




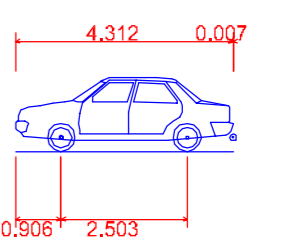
**GENERAL NOTES**

1. This drawing to be read in conjunction with all relevant civil engineering drawings.

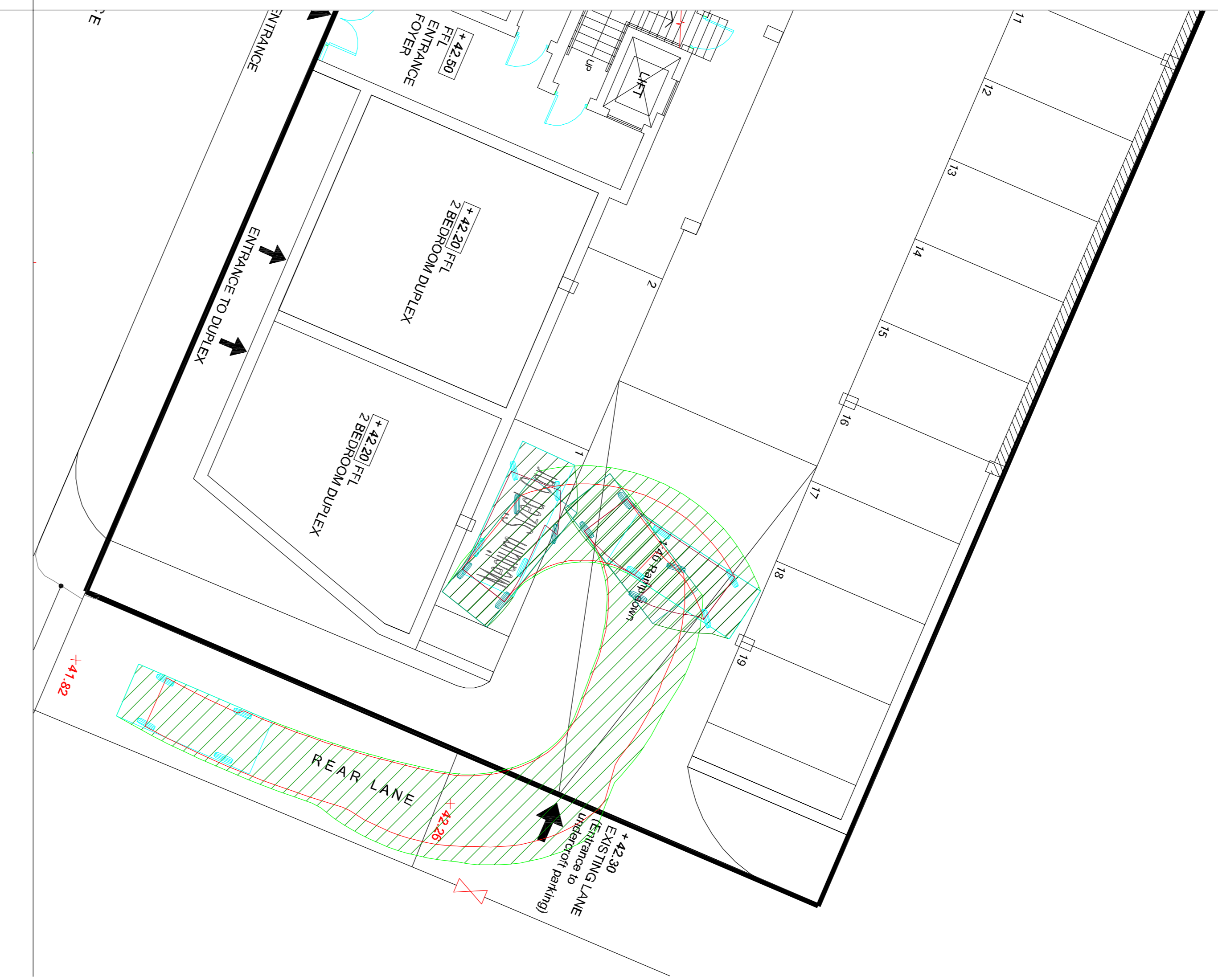
**LEGEND**



Vehicle Chassis, shown at start & end of path and change of direction (forward).  
 Vehicle Chassis, shown at start & end of path and change of direction (reverse).



<b>Medium Sized Car</b>	
Overall Length	4.319m
Overall Width	1.686m
Overall Body Height	1.466m
Min Body Ground Clearance	0.228m
Max Track Width	1.591m
Lock to Lock Time	4.00s
Kerb to Kerb Turning Radius	5.042m



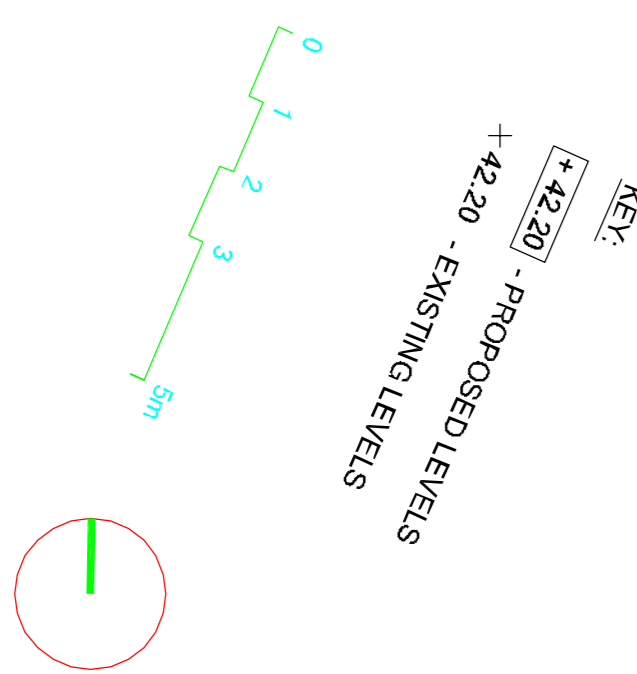
**NOT FOR CONSTRUCTION**

Rev	Date	Description	Drawn	Check



5A Andrews Buildings  
 Penarth, CF64 2AA  
 Tel 029 2070 0524  
 mail@linetransport.com  
 www.linetransport.com

Drawing Status	Date	17/10/2018
<b>PRELIMINARY</b>	Scale	1:100@A1
Project	Drawn	OJD
<b>Former Monty Smith Garage; Penarth</b>	Checked	HLJ
Title	Project No	<b>18188</b>
<b>Swept path analysis; 4.3m Medium Sized Car; Manoeuvring on site.</b>	Client	Project No
Drawing No	Revision	
18188.OS.101.01		



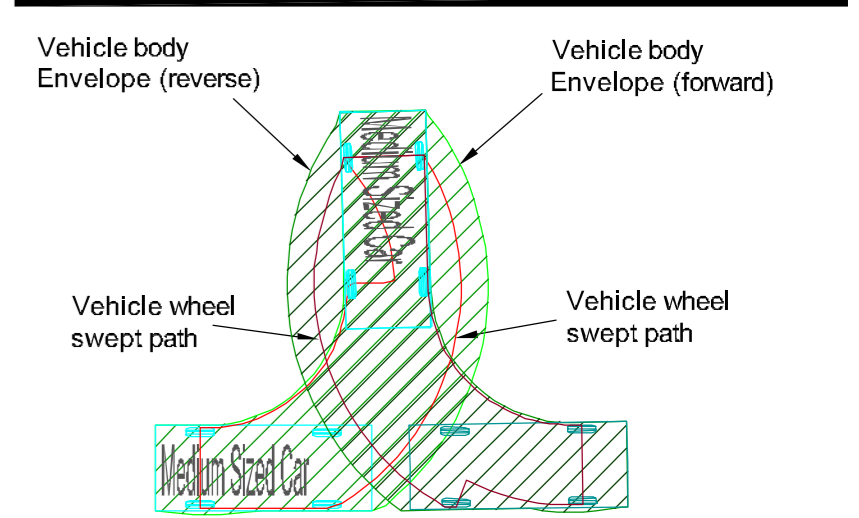
KEY:  
 +42.20 - PROPOSED LEVELS  
 +42.20 - EXISTING LEVELS



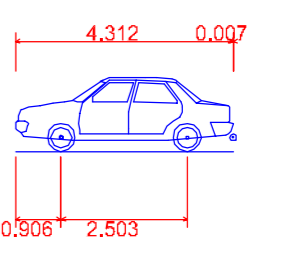
**GENERAL NOTES**

- This drawing to be read in conjunction with all relevant civil engineering drawings.

**LEGEND**



Vehicle Chassis, shown at start & end of path and change of direction (forward).  
 Vehicle Chassis, shown at start & end of path and change of direction (reverse).



<b>Medium Sized Car</b>	
Overall Length	4.319m
Overall Width	1.686m
Overall Body Height	1.466m
Min Body Ground Clearance	0.228m
Max Track Width	1.591m
Lock to Lock Time	4.00s
Kerb to Kerb Turning Radius	5.042m

**NOT FOR CONSTRUCTION**

Rev	Date	Description	Drawn	Check



5A Andrews Buildings  
 Penarth, CF64 2AA  
 Tel 029 2070 0524

mail@linetransport.com  
 www.linetransport.com

Drawing Status	Date	17/10/2018
<b>PRELIMINARY</b>	Scale	1:100@A1
Project	Drawn	OJD
<b>Former Monty Smith Garage; Penarth</b>	Checked	HLJ
	Project No	<b>18188</b>
Title	Client Project No	
<b>Swept path analysis; 4.3m Medium Sized Car; Passing at access.</b>	Revision	
Drawing No		
18188.OS.101.01		