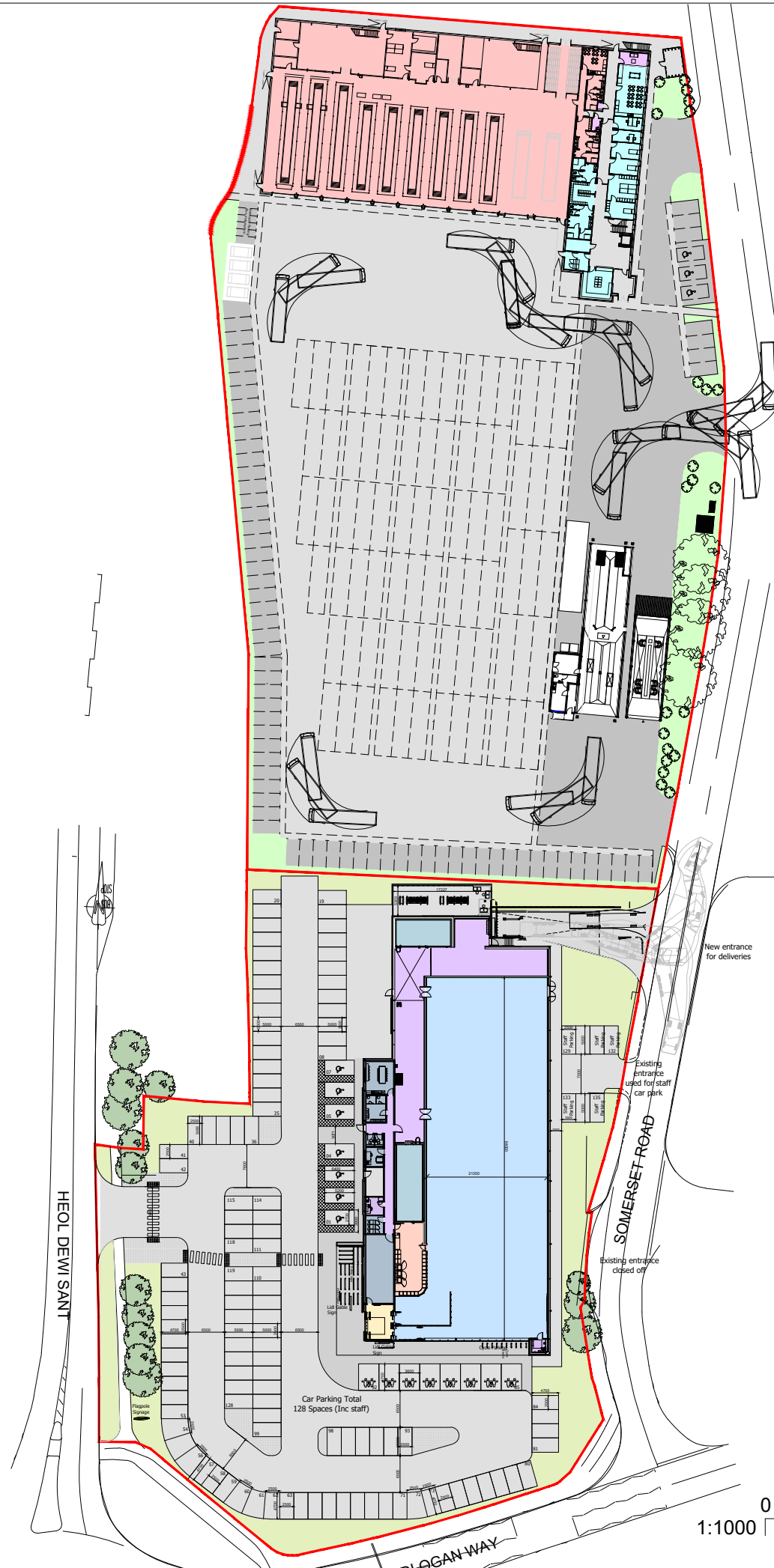




clients logo



AREA SCHEDULE

TOTAL SITE AREA: 21334 m²

LIDL STORE

STORE SITE AREA: 8906 m²
Lidl Store G.I.A.: 2200 m²

LIDL PARKING

Standard Parking: 113 Spaces
Disabled Parking: 7 Spaces
Parent & Child Parking: 8 Spaces
Staff Parking: 7 Spaces
TOTAL PARKING: 135 Spaces

Cycle Parking: 10 Stands

COACH STATION

COACH STATION SITE AREA: 12428 m²
Coach Station Main Building G.I.A.: 2098 m²
Coach Station Re-fueling Facility: 34 m²

COACH STATION PARKING

Standard Parking: 66 Spaces
Visitors Parking: 4 Spaces
Electrical Parking: 3 Spaces
Disabled Parking: 3 Spaces
TOTAL PARKING: 76 Spaces

Motorcycle Parking: 6 Spaces
Cycle Parking: 10 Spaces

3	13.12.18	walkway added, parking & plant room updated	MF
2	23.11.18	Site plan Layout amended to client comments	MF
1	20.11.18	Legend Added	MF
REV	DATE	DESCRIPTION	BY

IN CASE OF DOUBT OR DISCREPANCIES PLEASE REFER TO ARCHITECT FOR INSTRUCTIONS.
THIS DRAWING SHOULD NOT BE SCALED.
THIS DRAWING IS COPYRIGHT.

01. DESIGN	04. PRODUCTION INFORMATION	07. CONSTRUCTION
02. DESIGN CONCLUSION	05. BUILDING REGULATIONS	08. FINAL CONSTRUCTION
03. PLANNING	06. TENDER	09. SPARE

DRAWING STATUS :

01. DESIGN

01. PRELIMINARY	02. FOR COMMENT	03. FOR APPROVAL
-----------------	-----------------	------------------

OTHER :

01. PRELIMINARY

PROJECT :

PROPOSED LIDL STORE & STAGE COACH
SOMERSET ROAD
CWMBRAN

DRAWING TITLE :

PROPOSED COMBINED SITE PLAN



4th Floor, Greyfriars House
Greyfriars Road,
Cardiff CF10 3AL

Tel: 029 2055 8900 Fax: 029 2039 9592
www.boyesrees.co.uk
Registered office. As above Reg No. 295 1683 (England & Wales)

DATE: 19-11-2018

SCALE: 1:1000 @A3

JOB NO.: 5497

DRAWN BY: MF

DWG NO.: 010002

REV: 3

N:\01 Projects\5497 Lidl
CAD REFERENCE: Cwmbran\40_Architectural\41_Design\04_Sketch\5497-BRA-010002
Lidl Cwmbran current 2018 07 31.dwg